

Children's Health Medical Center Dallas

Children's Health Scholarly Collection

2024

Newsletters

7-2024

July 2024

Forest Melton

Jennifer Clark

Stormee Williams

Follow this and additional works at: <https://scholarlycollection.childrens.com/healthequity-news2024>



Part of the [Civic and Community Engagement Commons](#), [Community-Based Learning Commons](#), [Community-Based Research Commons](#), [Community Health and Preventive Medicine Commons](#), [Family, Life Course, and Society Commons](#), [Health Services Administration Commons](#), [Health Services Research Commons](#), [Inequality and Stratification Commons](#), [Medicine and Health Commons](#), [Other Public Health Commons](#), [Public Health Education and Promotion Commons](#), [Race and Ethnicity Commons](#), and the [Social Work Commons](#)

Forest Melton

From: Health Equity <healthequity@childrens.com>
Sent: Tuesday, July 2, 2024 9:33 AM
To: Forest Melton
Subject: Bridging the Gap: July 2024

[View on web](#)

bridging the gap

children'shealth?



Medical Explorers Day

Health Equity hosted its first-ever "Medical Explorers Day" event at Dallas ISD's Buckner Terrace Montessori on May 1, providing elementary students

the opportunity to learn about various health care professions by interacting with physicians, nurses and allied health experts from diverse backgrounds.

The event was designed to inspire children to discover and explore different careers within the medical field. Through hands-on activities and simulations, students learned about roles in health care and what it's like to work within the field.

Read more about [Medical Explorers Day](#)



Community Health Improvement Week

Community Health Improvement (CHI) Week was June 10 – 14. Led by the American Hospital Association, this national observance week recognizes health care professionals' efforts to advance health equity and enhance the health and well-being of individuals and communities across the country.

This week and throughout the year, we recognize the incredible efforts by team members who are working together to bridge care gaps in our community. Through their selfless service, they uphold our mission of making life better for children.

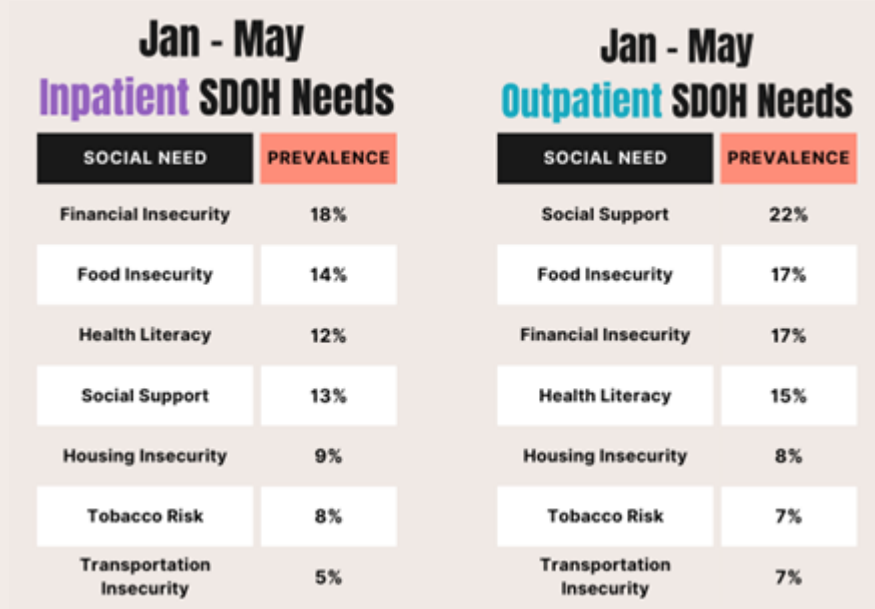
Read more about [Community Health Improvement Week](#)

Inpatient SDOH Screening

Children's HealthSM has expanded SDOH screening to the inpatient setting on February 22. In March, Inpatient achieved a 24% screening rate. Through the dedication and commitment of the inpatient team, their screening rate more than doubled in May to 51%. This remarkable progress is a testament to the

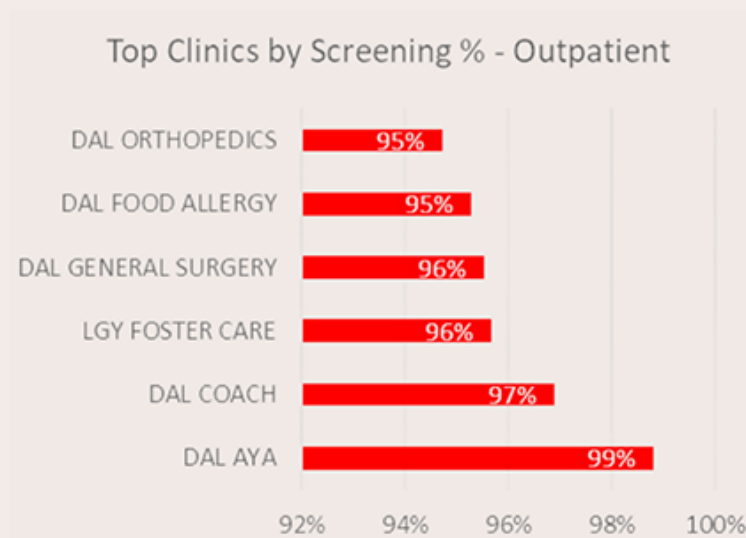
hard work of countless team members and the great efforts of the inpatient leadership team. Thank you for your unwavering commitment and hard work.

SDOH screening updates

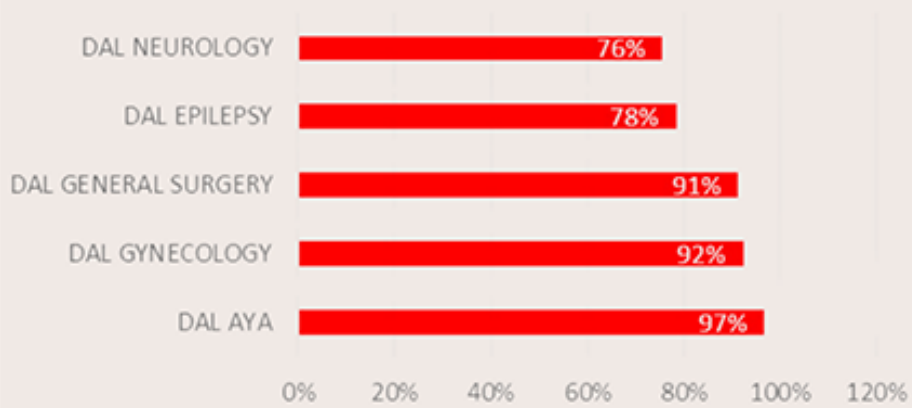


[Visit the SDOH Dashboard](#) for a more detailed and up-to-date view of the data.

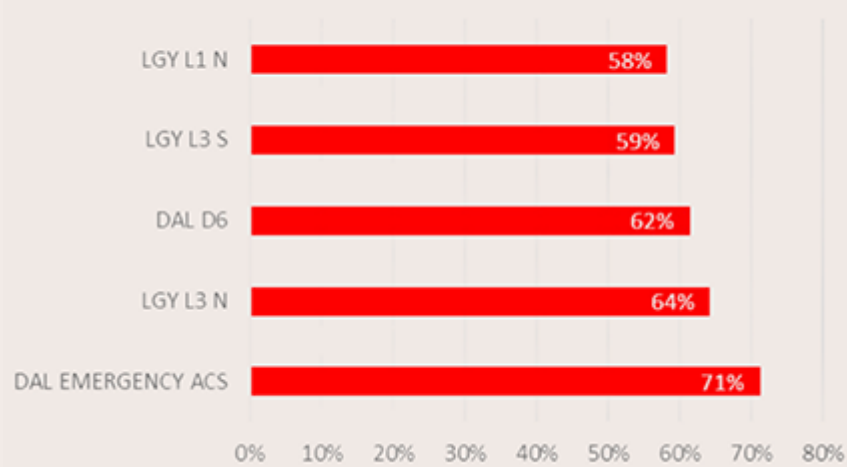
The top outpatient clinics by screening percentage and by community resources provided for April – May 2024:



Top Clinics by Community Resource % - Outpatient



Top Clinics by Screening % - Inpatient



Health Equity Hero



This month's Health Equity Hero is **Ashlyn Coenraad**, D8 Clinical Manager. Ashlyn has led the charge in helping to identify barriers to SDOH screening and identifying root causes. Within D8, Ashlyn has piloted multiple potential solutions, serving as a testing ground that has led to usable implementation tools that the entire inpatient department can benefit from. Her contributions have been invaluable. Thank you, Ashlyn, for your dedication and hard work — we

deeply appreciate everything you do.

This month, we are thrilled to honor not just one, but two Health Equity Heroes. **Hayden Dutton**, Director of Nursing. Similarly, Harden has been an invaluable partner in identifying barriers to SDOH screening and investigating solutions. Her commitment and dedication have been instrumental in driving progress and make her a joy to work with. Thank you, Hayden — we deeply appreciate all that you do!



Recognize a Health Equity Hero

- Visit the [RED page](#).
- After filling out who you want to recognize and why, scroll down and choose Select an e-card: Thank you for being a **Health Equity Hero**.

Select an eCard



Quick Links

- [Health Equity Children's Website](#)
- [Health Equity Sharepoint](#)



Children's Health | [1935 Medical District Dr. | Dallas, TX 75235 | 1-844-4CHILDRENS](#)

© 2024 Children's Health. All rights reserved.

